

# LOGLIFT 118S

## CAPACITY 12 tm



# LOGLIFT 118S BASIC DATA

Technical data	S79	S79i	S83i
Max. lifting capacity, net (kNm)	115	116	115
Max outreach (m)	7.9	7.9	8.3
Hydraulic boom extensions (m)	1.6	1.6	1.6
Outreach / lifting capacity (m/kg)	3.0 / 3250 4.0 / 2800 5.0 / 2320 6.0 / 1960 7.0 / 1680 7.9 / 1440 - -	3.0 / 3250 4.0 / 2800 5.0 / 2300 6.0 / 1960 7.0 / 1680 7.9 / 1460 - -	3.0 / 3250 4.0 / 2750 5.0 / 2260 6.0 / 1960 7.0 / 1680 8.3 / 1360 - -
Slewing system	Double	Double	Double
Slewing angle (°)	425	425	425
Slewing torque, gross (kNm)	27.5	27.5	27.5
Max. slope viable at full capacity (°)	8	8	8
Max. working pressure (MPa)	24	24	24
Recommended oil flow – fixed pump, 1-pump (l/min)	80	80	80
Recommended oil flow – fixed pump, 2-pump (l/min)	2 × 70 - 80	2 × 70 - 80	2 × 70 - 80
Min. recommended oil flow – variable displacement pump (l/min)	170	170	170
Power needed at rec. oil flow - fixed pump, 1-pump (kW)	35	35	35
Power needed at rec. oil flow - fixed pump, 2-pump (kW)	70	70	70
Power needed at rec. oil flow - variable displacement pump (kW)	75	75	75
Road width (mm)	2490	2490	2490
Weight, Top seat crane with standard stabilizer equipment (kg)*	2040	2040	2050
Weight, Top seat crane with B4500 stabilizer equipment (kg)*	2090	2100	2110
Weight, Cabin crane with standard stabilizer equipment (kg)**	2450	2450	2460
Weight, Cabin crane with B4500 stabilizer equipment (kg)**	2510	2510	2520

\*Weight with fixed pump system. Oil weight included.

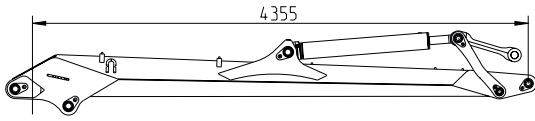
\*\*Weight with Timbertronics. Oil weight included.

S84	S84i	S88i	S96	S96i	S101	S101i
111	113	112	109	108	105	104
8.4	8.4	8.8	9.6	9.6	10.1	10.1
1.6	1.6	1.6	3.2	3.2	3.2	3.2
3.0 / 3500 4.0 / 2750 5.0 / 2240 6.0 / 1920 7.0 / 1640 8.4 / 1320 - -	3.0 / 3450 4.0 / 2750 5.0 / 2240 6.0 / 1900 7.0 / 1640 8.4 / 1340 - -	3.0 / 3300 4.0 / 2700 5.0 / 2200 6.0 / 1880 7.0 / 1620 8.0 / 1420 8.8 / 1240 -	3.0 / 3400 4.0 / 2650 5.0 / 2180 6.0 / 1860 7.0 / 1580 8.0 / 1360 9.0 / 1200 9.6 / 1040	3.0 / 3350 4.0 / 2600 5.0 / 2140 6.0 / 1820 7.0 / 1560 8.0 / 1340 9.0 / 1180 9.6 / 970	3.0 / 3450 4.0 / 2600 5.0 / 2100 6.0 / 1780 7.0 / 1520 8.0 / 1320 9.0 / 1160 10.1 / 1000	3.0 / 3400 4.0 / 2550 5.0 / 2080 6.0 / 1760 7.0 / 1500 8.0 / 1300 9.0 / 1140 10.1 / 970
Double	Double	Double	Double	Double	Double	Double
425	425	425	425	425	425	425
27.5	27.5	27.5	27.5	27.5	27.5	27.5
8	8	8	8	8	8	8
24	24	24	24	24	24	24
80	80	80	80	80	80	80
2 × 70 - 80	2 × 70 - 80	2 × 70 - 80	2 × 70 - 80	2 × 70 - 80	2 × 70 - 80	2 × 70 - 80
170	170	170	170	170	170	170
35	35	35	35	35	35	35
70	70	70	70	70	70	70
75	75	75	75	75	75	75
2490	2490	2490	2490	2490	2490	2490
2060	2060	2080	2190	2220	2220	2250
2120	2120	2140	2250	2280	2280	2310
2470	2470	2490	2600	2630	2630	2660
2530	2530	2550	2660	2690	2690	2720

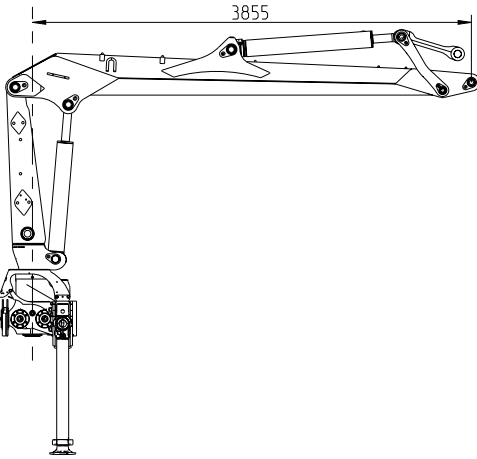
## Outreaches = Available boom combinations

### First booms

84 / 84i / 88i / 101 / 101i

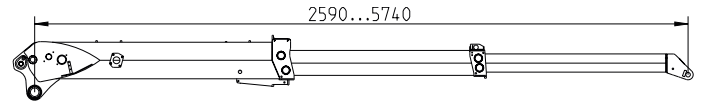


79 / 79i / 83i / 96 / 96i

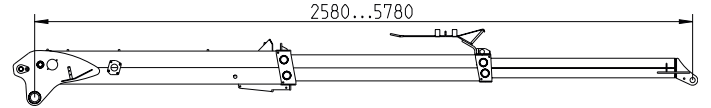


### Second booms and Telescope systems

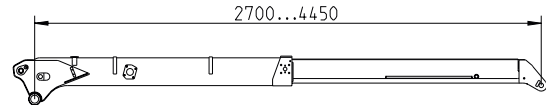
96i / 101i



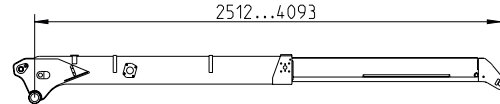
96 / 101



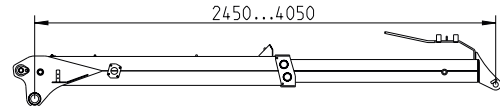
83i / 88i



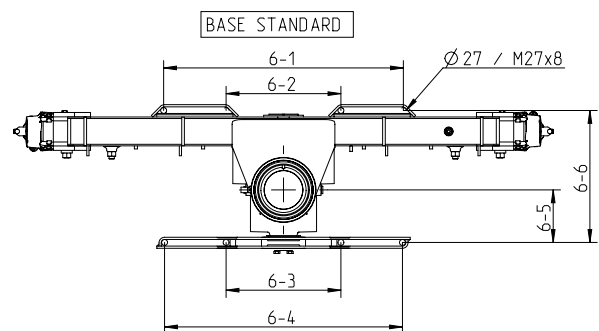
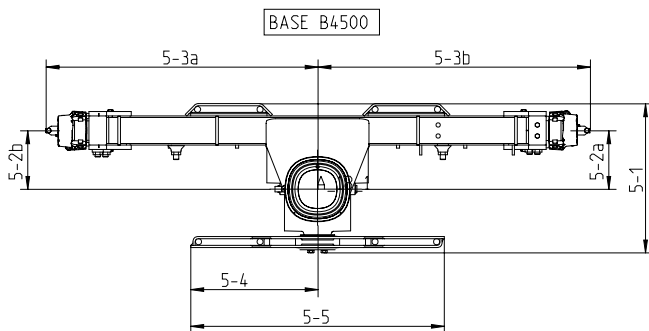
79i / 84i



79 / 84



### Chassis installations



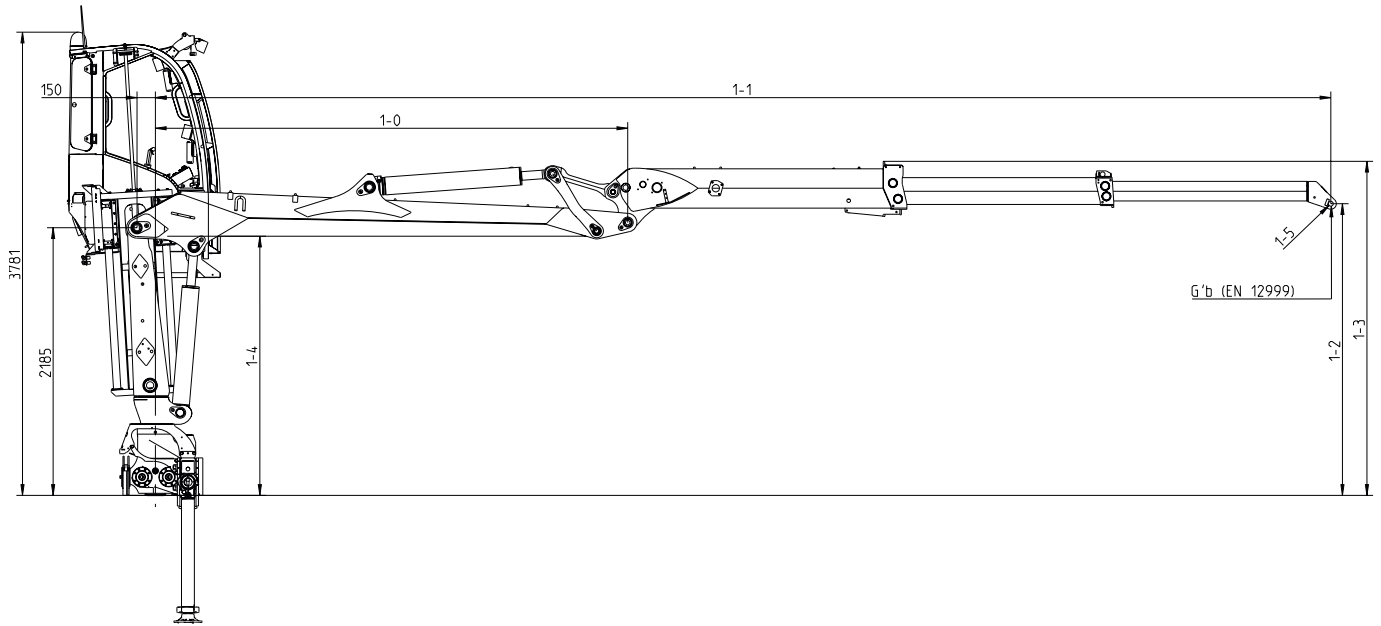
Base	5-1	5-2a	5-2b	5-3a	5-3b	5-4	5-5
Standard	680	266	266	1235	1235	575	1150
B4500	680	266	266	1235	1235	575	1150

All measurements in mm

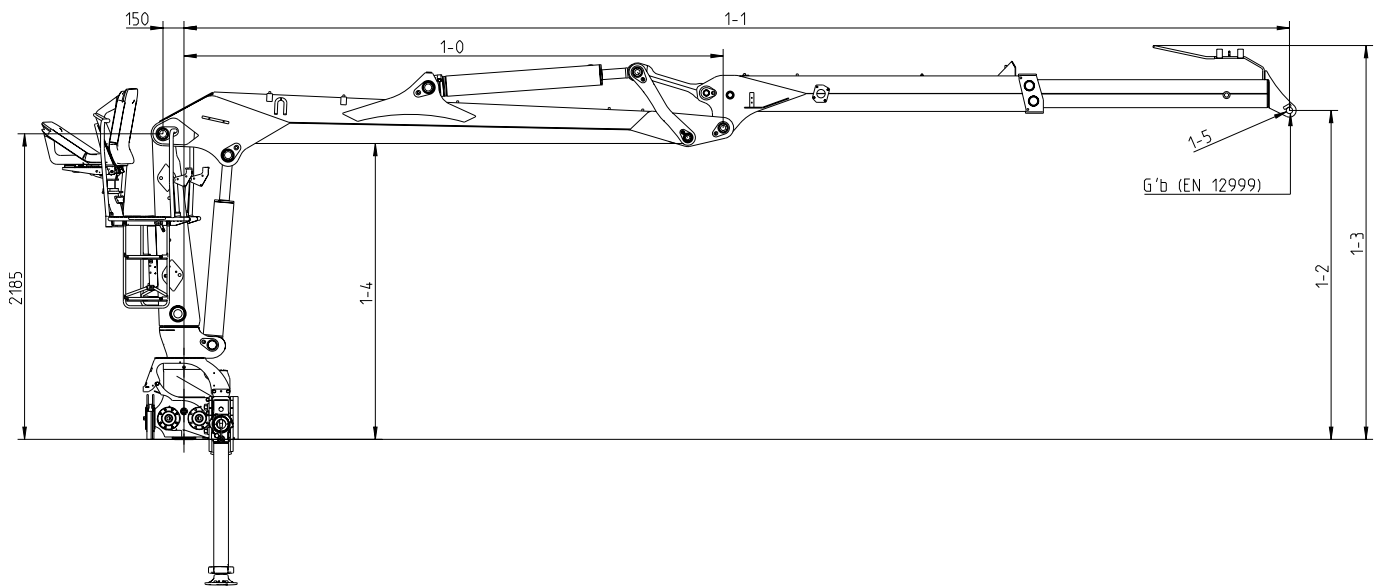
Fastening	6-1	6-2	6-3	6-4	6-5	6-6
Standard	1090	520	520	1080	240	600
B4500	1090	520	520	1080	240	600

All measurements in mm

### Side view with cabin C912 (S96i)



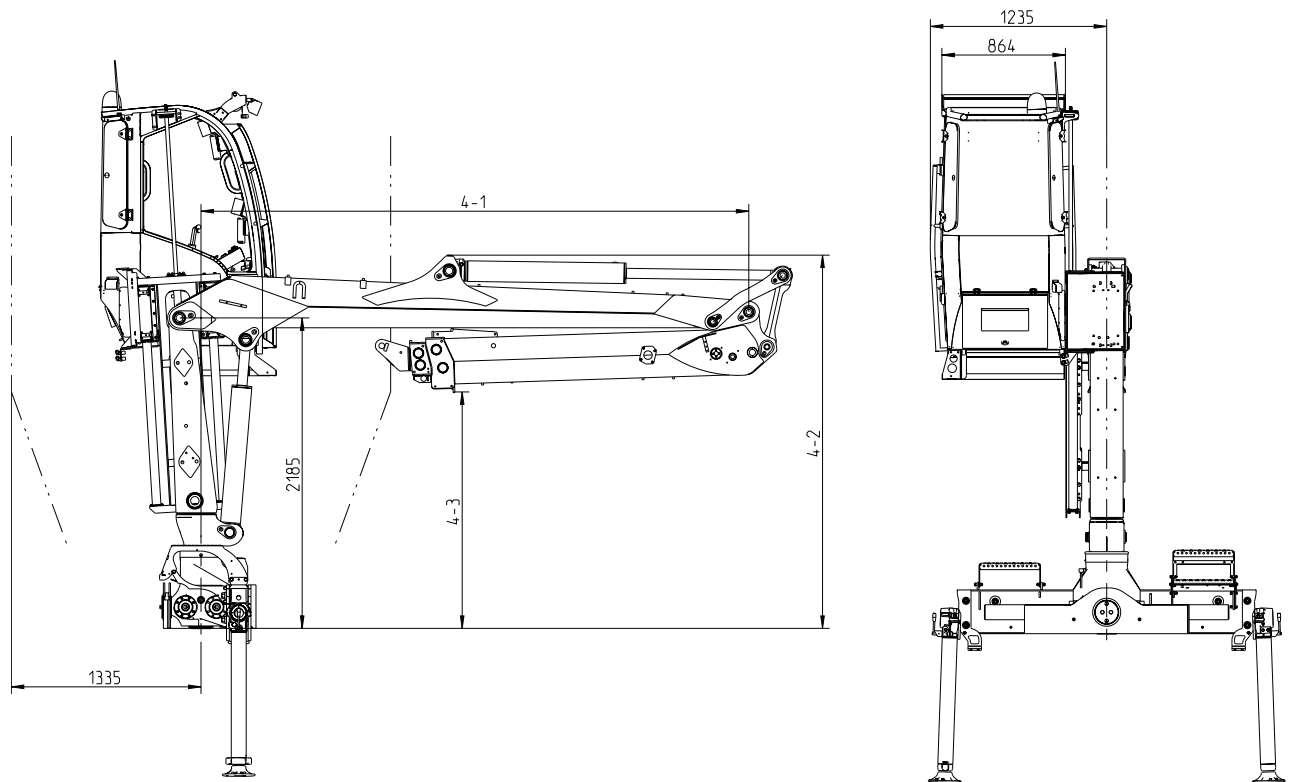
### Side view with top seat (S79)



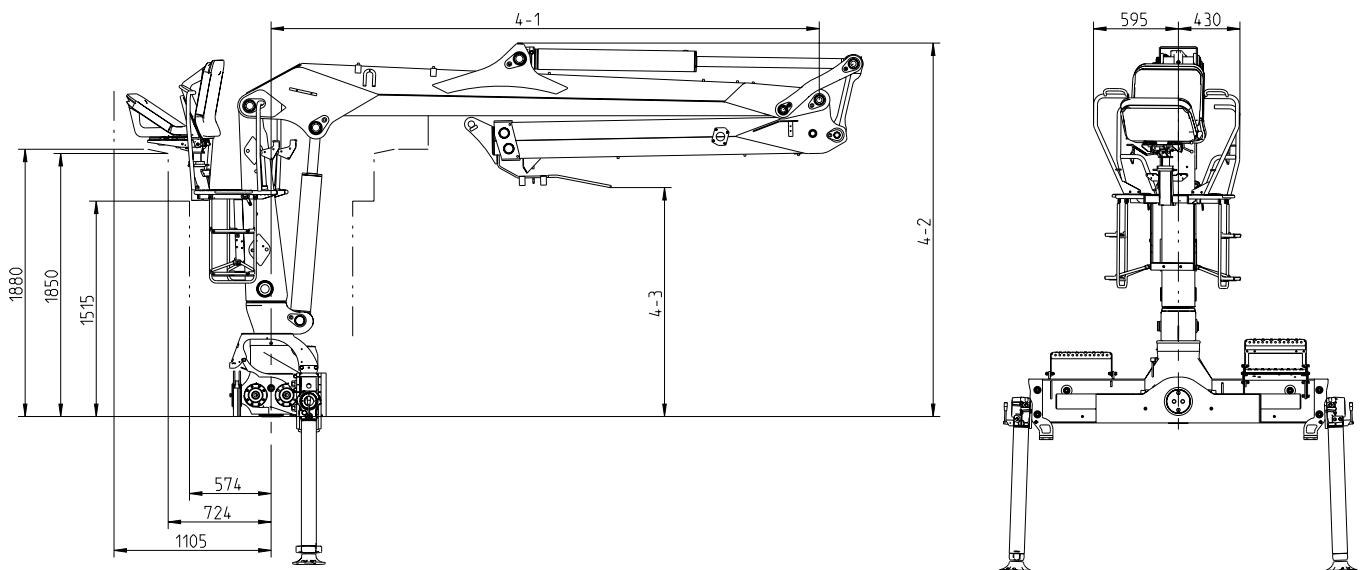
Model	1-0	1-1 min	1-1 max	1-2	1-3	1-4	1-5	G'b (kg)
79	3855	6305	7905	2352	2818	2116	Ø 45, B=80	306
79i	3855	6367	7948	2347	2692	2116	Ø 40, B=184	304
83i	3855	6556	8305	2348	2692	2116	Ø 40, B=184	304
84	4355	6805	8405	2357	2822	2117	Ø 45, B=80	329
84i	4355	6867	8448	2353	2695	2117	Ø 40, B=184	327
88i	4355	7055	8805	2353	2695	2117	Ø 40, B=184	327
96	3855	6436	9636	2380	2828	2116	Ø 45, B=80	355
96i	3855	6446	9596	2381	2727	2116	Ø 40, B=184	376
101	4355	6935	10135	2385	2833	2117	Ø 45, B=80	380
101i	4355	6945	10095	2386	2732	2117	Ø 40, B=184	401

All measurements in mm

## Folded view with cabin C912



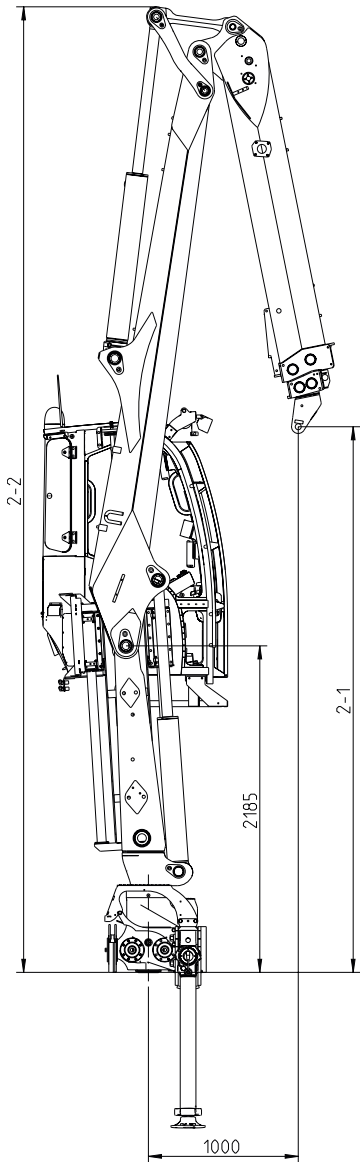
## Folded view with top seat



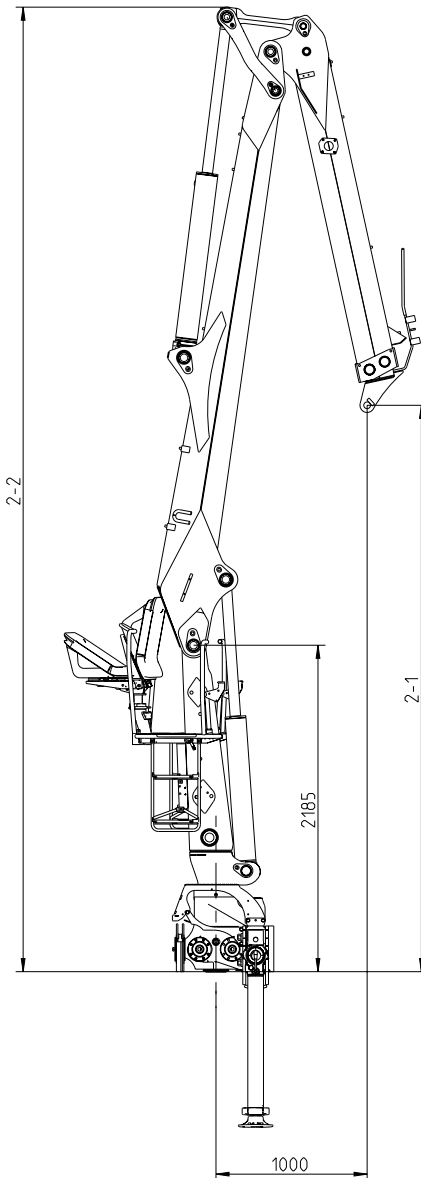
Model	4-1	4-2	4-3
79	3855	2627	1610
79i	3855	2627	1807
83i	3855	2627	1805
84	4355	2054	1051
84i	4355	2619	1814
88i	4355	2619	1811
96	3855	2627	1550
96i	3855	2627	1664
101	4355	2619	1557
101i	4355	2619	1666

All measurements in mm

**Upright view with cabin C912**



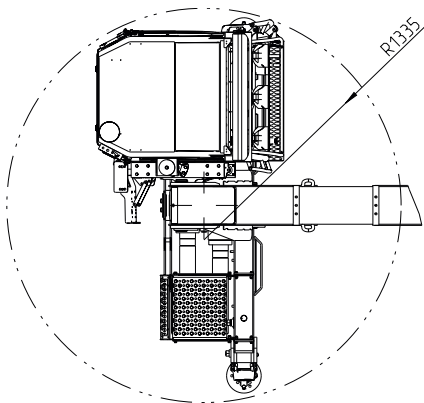
**Upright view with top seat**



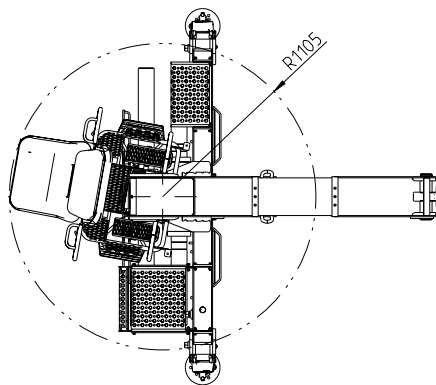
Model	2-1	2-2
79	3790	6460
79i	3730	6458
83i	3559	6460
84	4273	6945
84i	4216	6937
88i	4023	6937
96	3671	6458
96i	3651	6462
101	4144	6937
101i	4134	6937

*All measurements in mm*

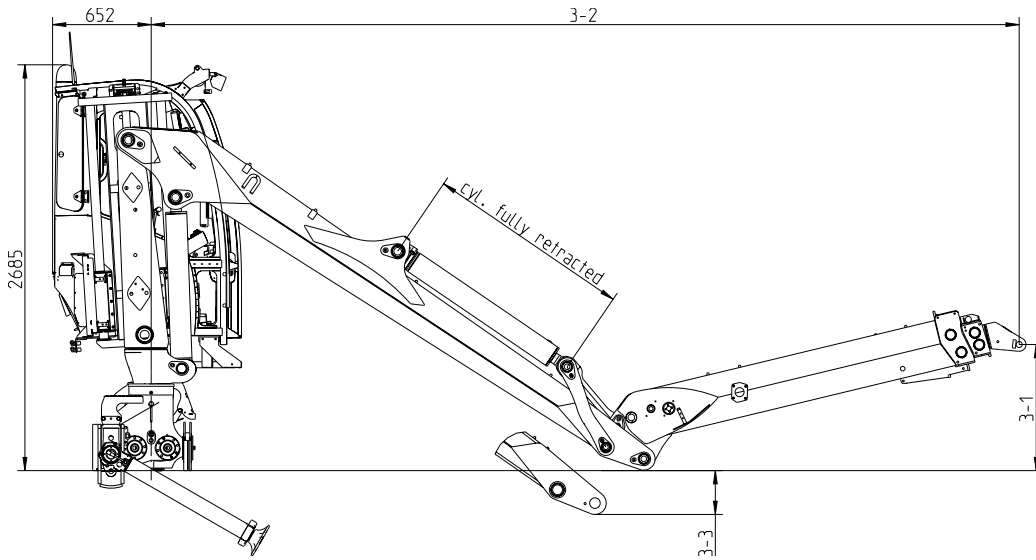
**Top view with cabin C912**



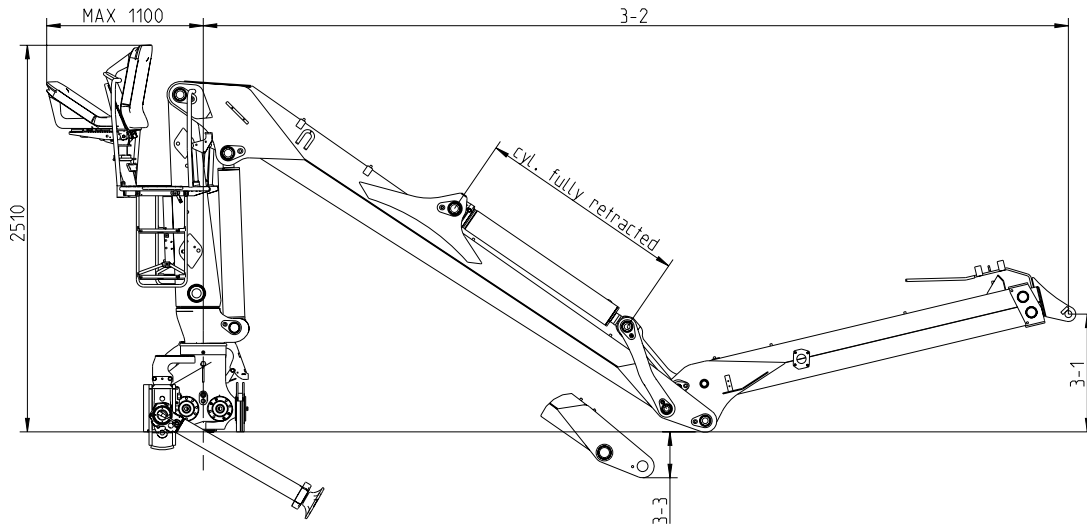
**Top view with top seat**



## Parked view with cabin C912



## Parked view with top seat

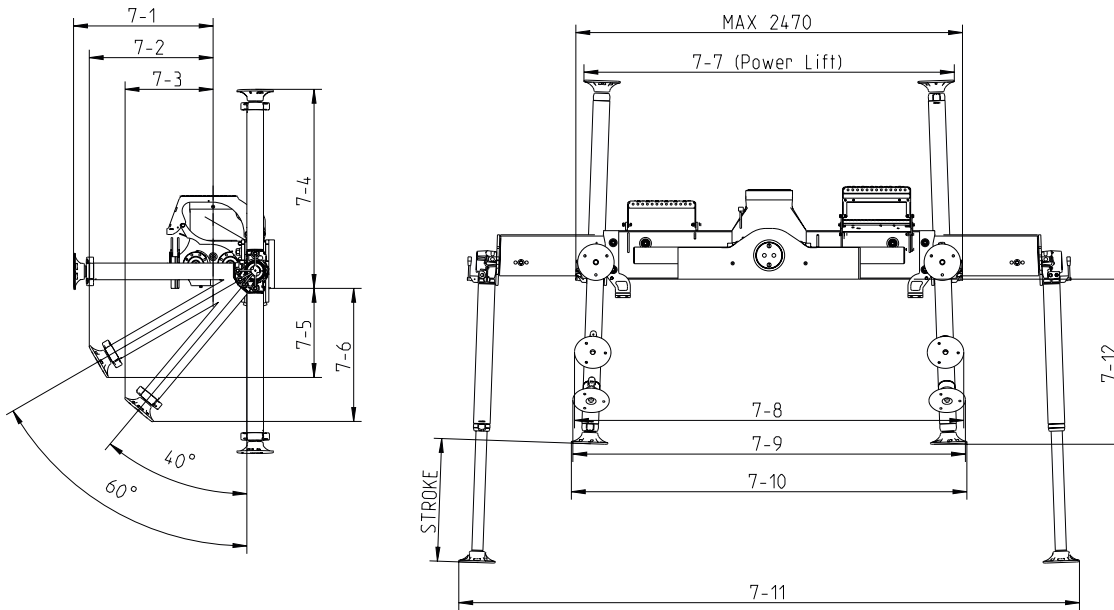


Model	3-1	3-2	3-3
79	765	5607	141
79i	773	5669	141
83i	817	5852	141
84	939	6127	447
84i	954	6188	447
88i	1011	6367	447
96	821	5728	141
96i	834	5739	141
101	1005	6242	447
101i	1009	6252	447

All measurements in mm



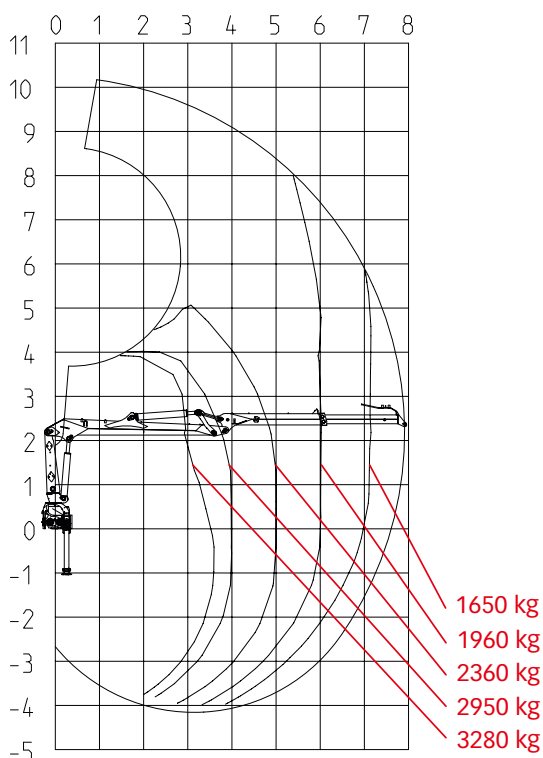
## Stabilizers



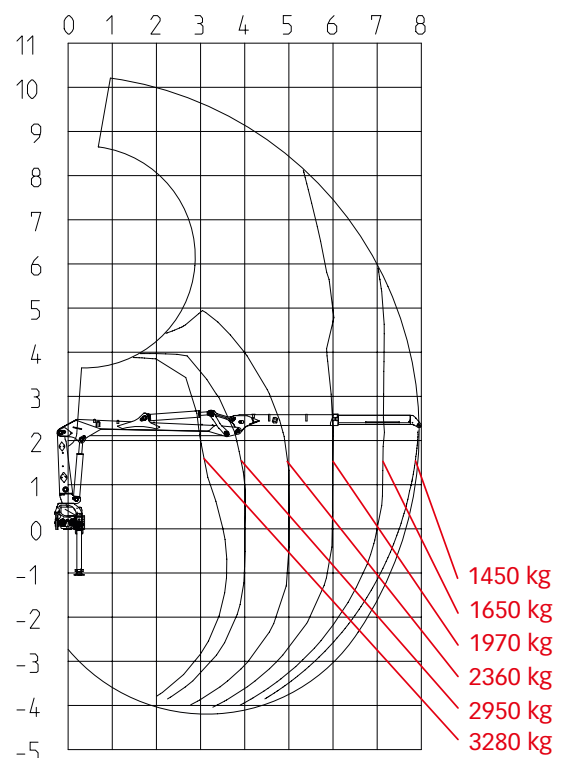
Measurements	Cylinder	Stroke	7-1	7-2	7-3	7-4	7-5	7-6	7-7	7-8	7-9	7-10	7-11	7-12
STD	H	580	715	635	450	1090	480	715	2385	2455	2470	2485	3890	865
	F	670	805	715	505	1180	525	785	2380	2455	2475	2490	3905	955
	A	750	885	785	555	1260	565	845	2340	2460	2480	2495	3915	1040
B4500	H	580	715	635	450	1090	475	710	2420	2470	2475	2485	4480	865
	F	670	805	715	505	1180	520	780	2415	2470	2480	2490	4485	955
	A	750	885	785	555	1260	560	840	2410	2470	2480	2490	4495	1035

All measurements in mm

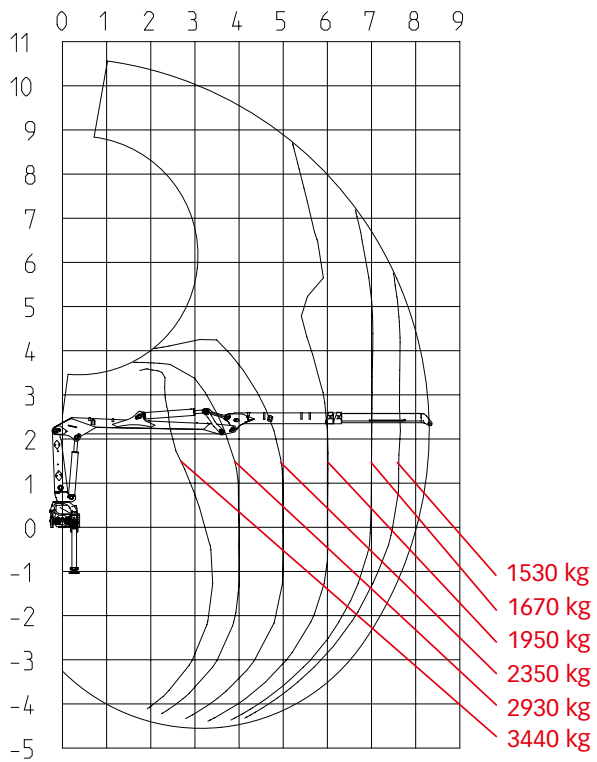
### Load diagram LOGLIFT 118S79



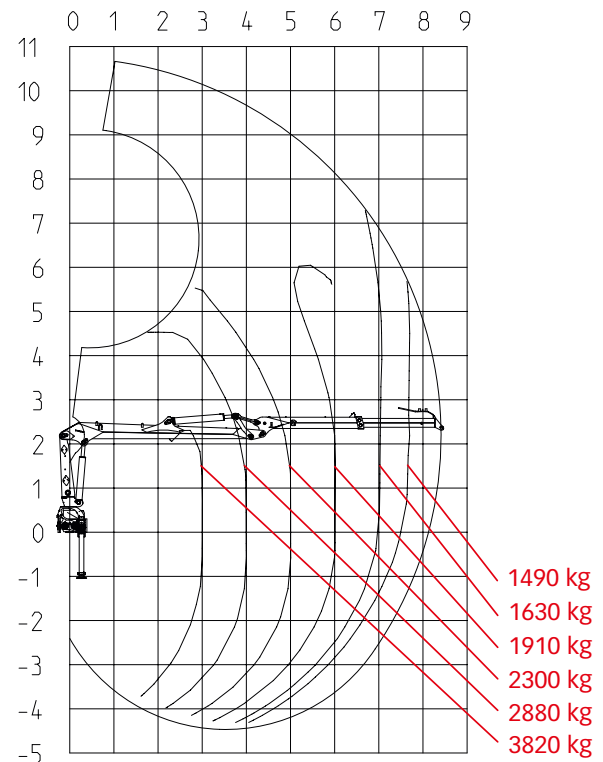
### Load diagram LOGLIFT 118S79i



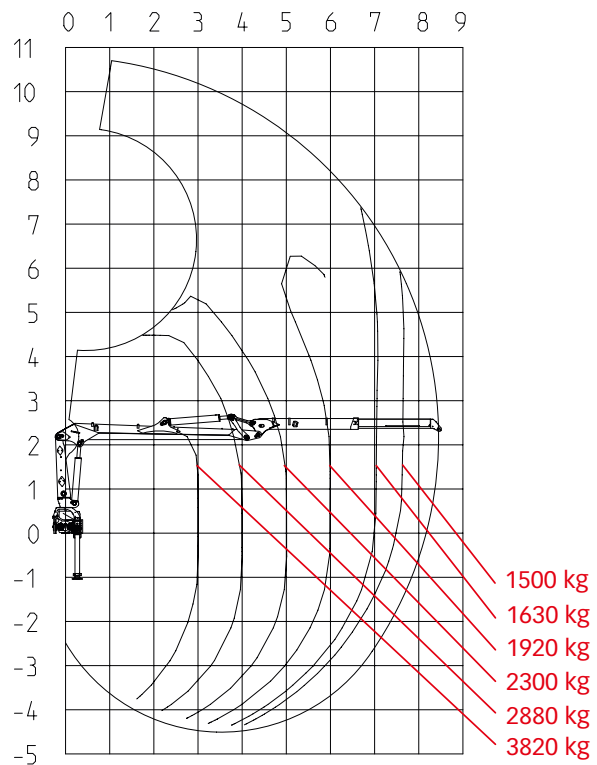
**Load diagram LOGLIFT 118S83i**



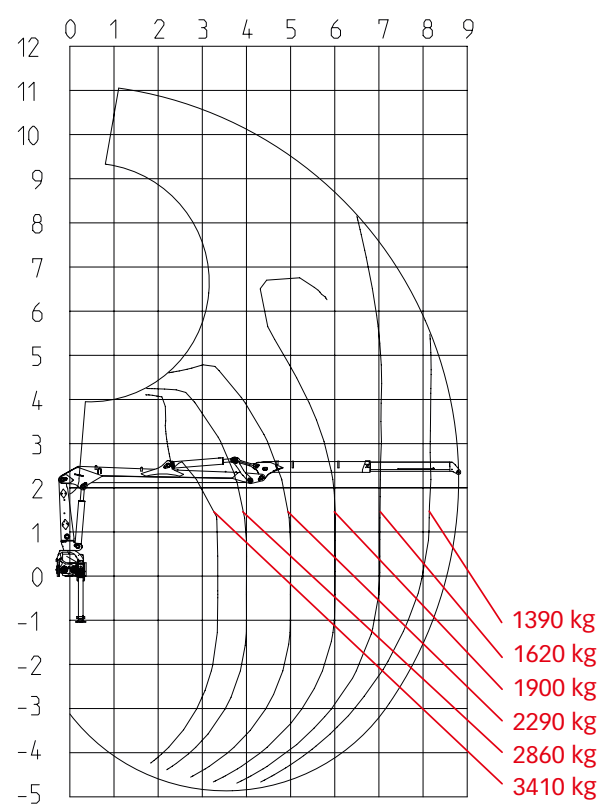
**Load diagram LOGLIFT 118S84**



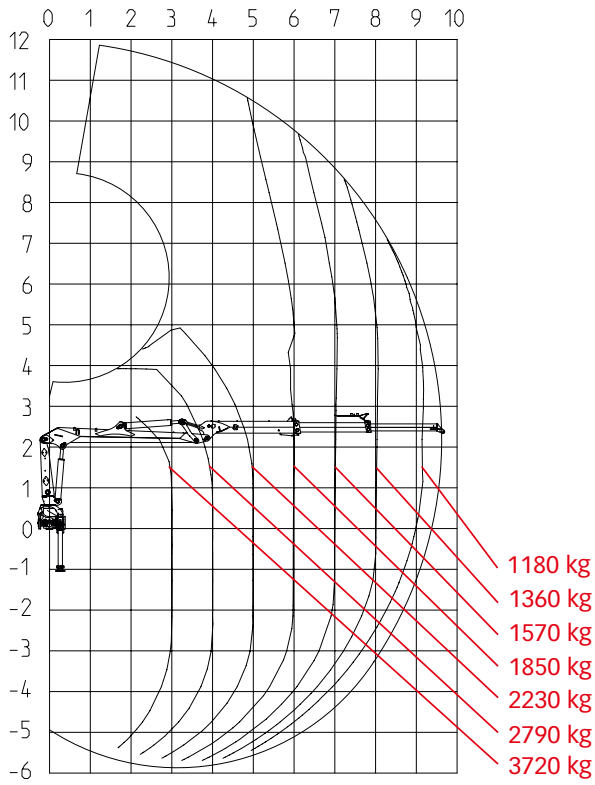
**Load diagram LOGLIFT 118S84i**



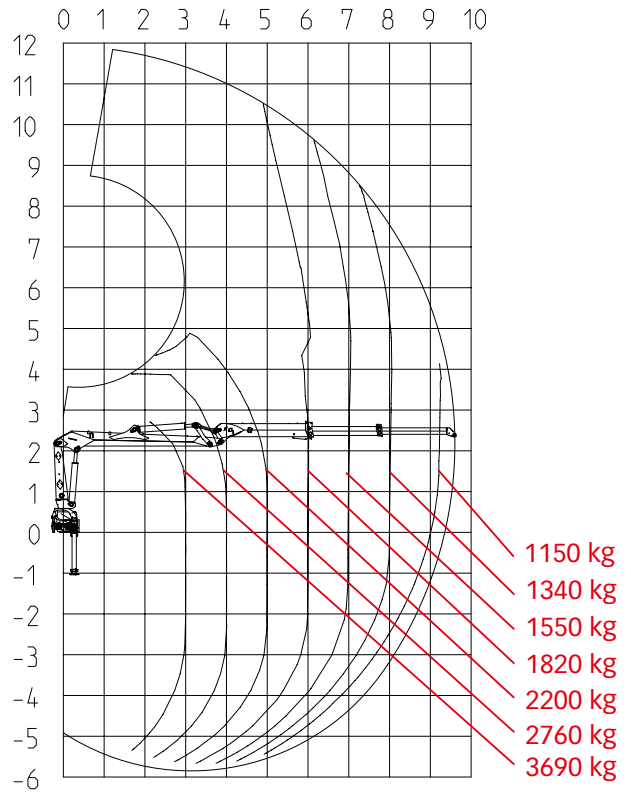
**Load diagram LOGLIFT 118S88i**



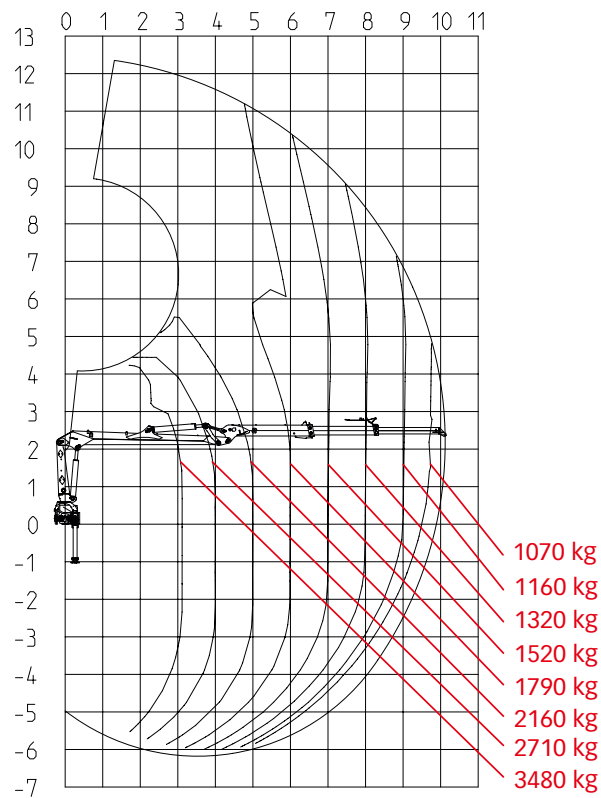
**Load diagram LOGLIFT 118S96**



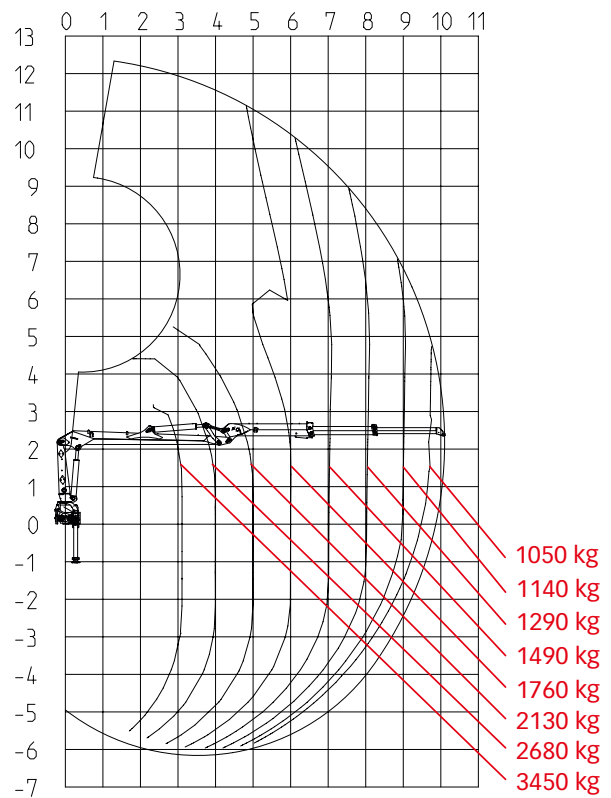
**Load diagram LOGLIFT 118S96i**



**Load diagram LOGLIFT 118S101**



**Load diagram LOGLIFT 118S101i**



# BUILT TO PERFORM

Hiab is the world's leading provider of on-road load handling equipment. Customer satisfaction is the first priority for us. Hiab's product range includes HIAB loader cranes, JONSERED recycling and forestry cranes, LOGLIFT forestry cranes, MOFFETT truck mounted forklifts and MULTILIFT demountables, as well as DEL, WALTCO and ZEPRO tail lifts.

[hiab.com](http://hiab.com)

Hiab is part of Cargotec.

[cargotec.com](http://cargotec.com)

**Disclaimer.** We reserve the right to make changes. Illustrations, drawings and data are not always in accordance with the latest version or standard model in production. The models in the pictures may present special equipment or colours.

© BD-F118S-EN-WW\_140910

